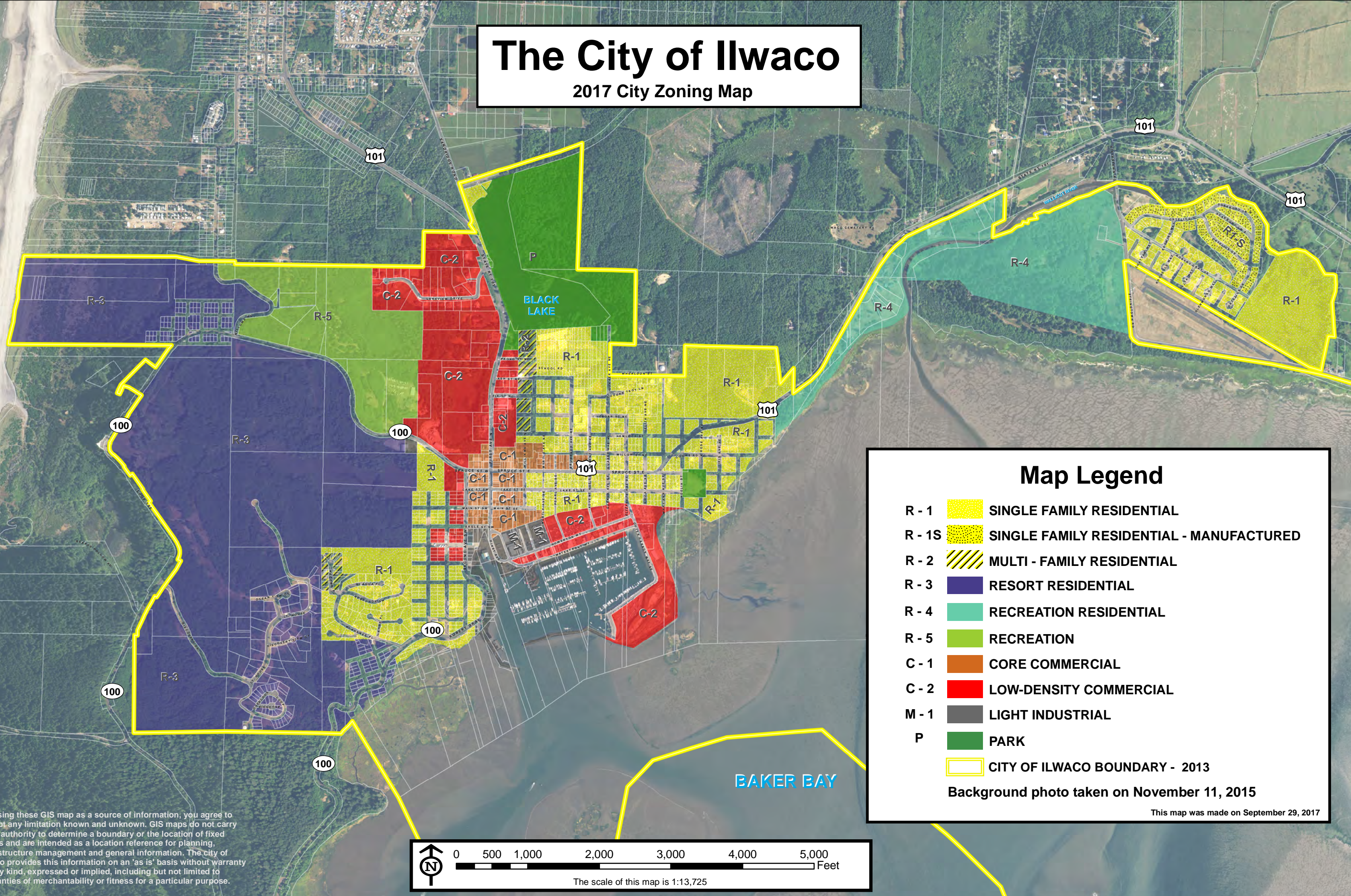


The City of Ilwaco

2017 City Zoning Map

PACIFIC OCEAN

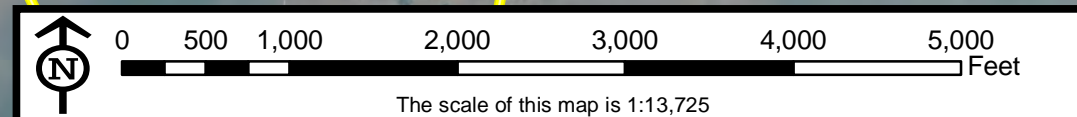


Map Legend

- R - 1 SINGLE FAMILY RESIDENTIAL
- R - 1S SINGLE FAMILY RESIDENTIAL - MANUFACTURED
- R - 2 MULTI - FAMILY RESIDENTIAL
- R - 3 RESORT RESIDENTIAL
- R - 4 RECREATION RESIDENTIAL
- R - 5 RECREATION
- C - 1 CORE COMMERCIAL
- C - 2 LOW-DENSITY COMMERCIAL
- M - 1 LIGHT INDUSTRIAL
- P PARK
- CITY OF ILWACO BOUNDARY - 2013

Background photo taken on November 11, 2015

This map was made on September 29, 2017



By using these GIS map as a source of information, you agree to accept any limitation known and unknown. GIS maps do not carry legal authority to determine a boundary or the location of fixed works and are intended as a location reference for planning, infrastructure management and general information. The city of Ilwaco provides this information on an 'as is' basis without warranty of any kind, expressed or implied, including but not limited to warranties of merchantability or fitness for a particular purpose.